

**AX58100\_EVB\_DIO  
Demonstration User Guide**

Revision 1.01  
October 13<sup>th</sup>, 2020

## Revision History

Revision	Date	Description
1.00	2019/05/28	Initial release
1.01	2020/10/13	Modified some description in Section 4-1 & 4-2

---

## Table of Contents

1. Introduction .....	5
2. Requirements .....	5
3. System Topology.....	6
4. Environment Setup.....	7
4-1. EtherCAT Slave .....	7
4-2. TwinCAT Project.....	9
5. 16 Bit DIO Verify .....	16
5-1. GPIO Output.....	16
5-2. GPIO Input.....	18

## List of Figures

Figure-1.	AX58100 EVB Board .....	5
Figure-2.	System topology .....	6
Figure-3.	AX58100 EVB board.....	7
Figure-4.	Connect.....	8
Figure-5.	Open Visual Studio .....	9
Figure-6.	Create new empty TwinCAT project.....	9
Figure-7.	Set Project name .....	10
Figure-8.	select "Realtime Ethernet Compatible Devices" .....	10
Figure-9.	NIC list and drive install .....	11
Figure-10.	ESI file location .....	11
Figure-11.	Reload device descriptions .....	12
Figure-12.	Scan device.....	12
Figure-13.	Attention dialog .....	13
Figure-14.	Choose NIC.....	13
Figure-15.	confirm .....	13
Figure-16.	Auto into free run mode .....	14
Figure-17.	The EtherCAT slave list .....	14
Figure-18.	The Run LED lights on.....	15
Figure-19.	EtherCAT slave list and active .....	16
Figure-20.	EtherCAT slave GPIO output pin list .....	16
Figure-21.	EtherCAT slave GPIO output pin status select.....	17
Figure-22.	EtherCAT slave GPIO output pin status=1. ....	17
Figure-23.	EtherCAT slave GPIO output pin status=0. ....	17
Figure-24.	EtherCAT slave GPIO input pin list.....	18
Figure-25.	Connection of GPIO output pin connect to input pin. ....	18
Figure-26.	GPIO output select =1, GPIO input status value =1. ....	19
Figure-27.	GPIO output select =0, GPIO input status value =0. ....	20

## 1. Introduction

This document introduces how to setup entire environment for demonstration of AX58100 EVB\_DIO. The application of EtherCAT master side develops by PLC (Programmable Logic Controller) language through Beckhoff TwinCAT engineering (XAE). And the IDE relies on Microsoft Visual Studio 2013 / 2015. The EtherCAT master application can be executed through the mentioned IDE or pure Beckhoff runtime package (XAR). In addition, the EtherCAT slave side employs AX58100 EVB board.

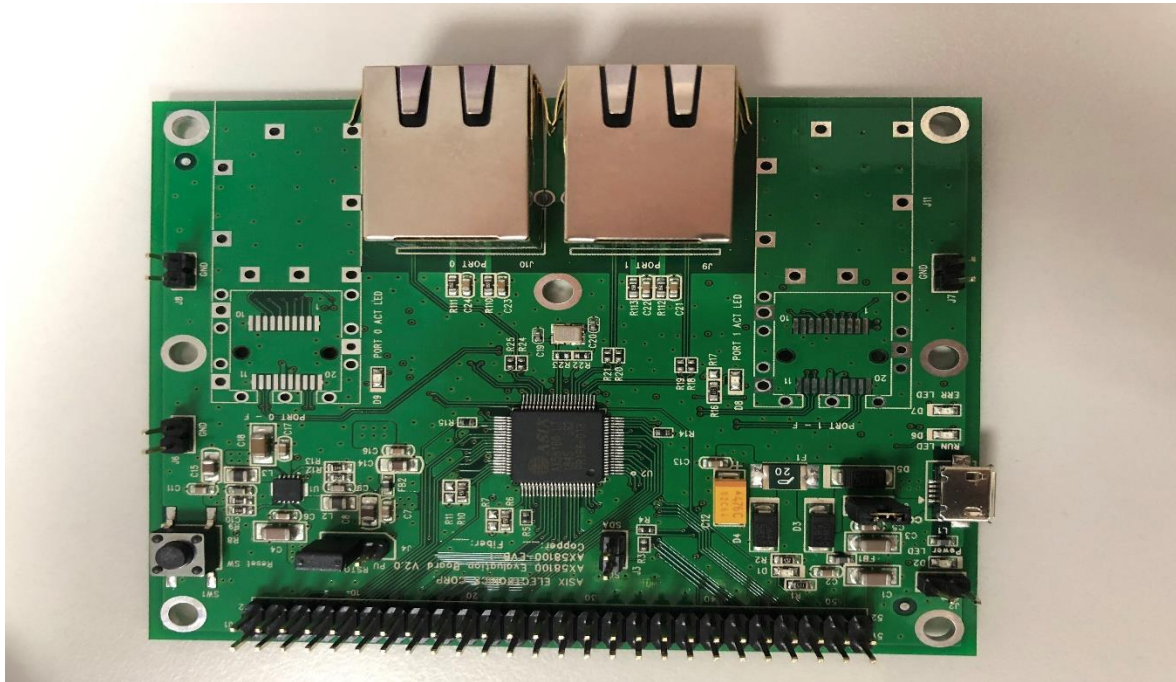


Figure-1. AX58100 EVB Board

## 2. Requirements

Before starting to setup, the demonstration environment that includes software and hardware. We list software / hardware requirements as following:

### EtherCAT Master Side

[Software]

- Windows 7 operation system (service pack 1 or later)
- Microsoft Visual Studio 2013 / 2015
- Beckhoff TwinCAT XAE (Version 4020.32 or higher)
- AX58100\_EVB\_DIO ESI file (xml)

[Hardware]

- An INTEL Network Adapter

### EtherCAT Slave Side

[Hardware]

- An AX58100 EVB
- AX58100 EVB board

**Note:** On 2018/04/27, we found the Windows security update, hotfix number KB4093118, can affect TwinCAT Master. If you installed, the PLC program when you run at master side will cause Windows system immediately frozen and you can't do anything anymore, the only way is to restart Windows. Please don't install hotfix KB4093118 on Windows if you want to run TwinCAT PLC program

### 3. System Topology

The system topology of demonstration is very simple. We only setup a TwinCAT master and let it connect to an EtherCAT slave. Below figure illustrates topology and block diagram in system upper layer:

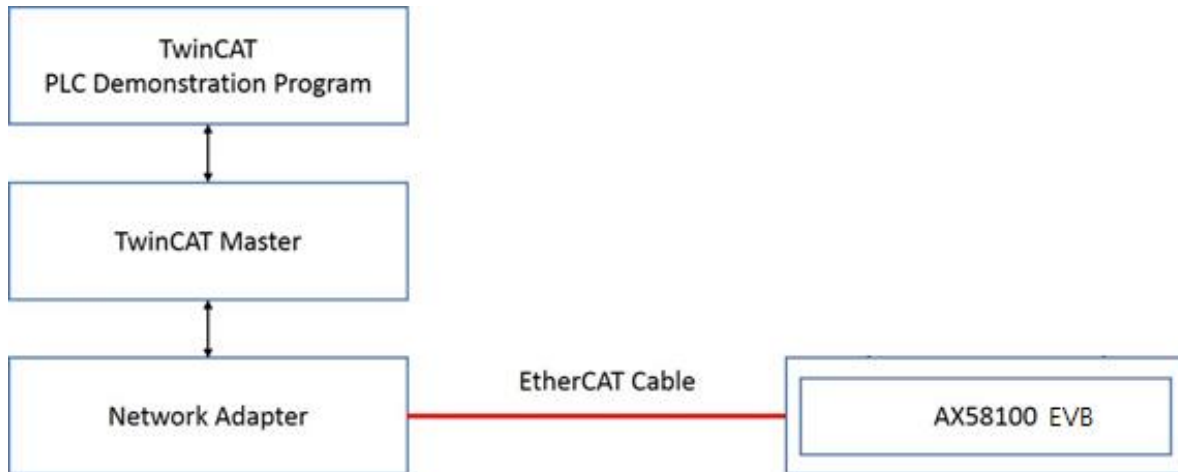


Figure-2. System topology

## 4. Environment Setup

This chapter describes how to setup entire environment for demonstration of AX58100 EVB DIO. It contains 3 parts: TwinCAT Project / TwinCAT PLC / EtherCAT Slave.

### 4-1. EtherCAT Slave

The EtherCAT Slave of AX58100 EVB provides 32 GPIO indicate the Input/output status. In this demonstration, we should connect EtherCAT slave with TwinCAT runtime PC. Please follow below steps:

- **Step 1:** Connect AX58100 EVB board with the PC you want to execute TwinCAT. AX58100 EVB board provided 2 Ethernet ports, port 0 and port 1, plug-in cable on port 0, another side plug-in on PC NIC port. The AX58100 EVB board powered by USB cable. The type is micro-USB.

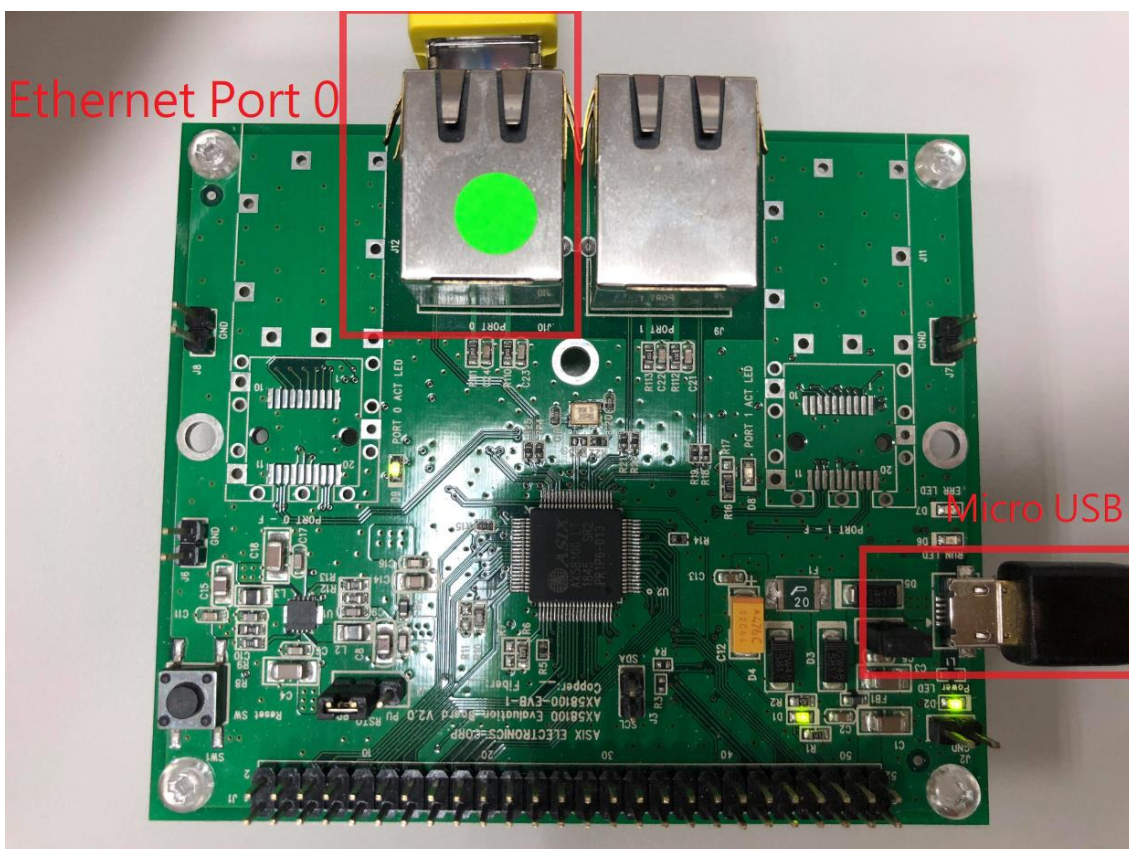


Figure-3. AX58100 EVB board

- **Step 2:** Please check the **power led** light on and **PORT 0 ACT LED** is blinking

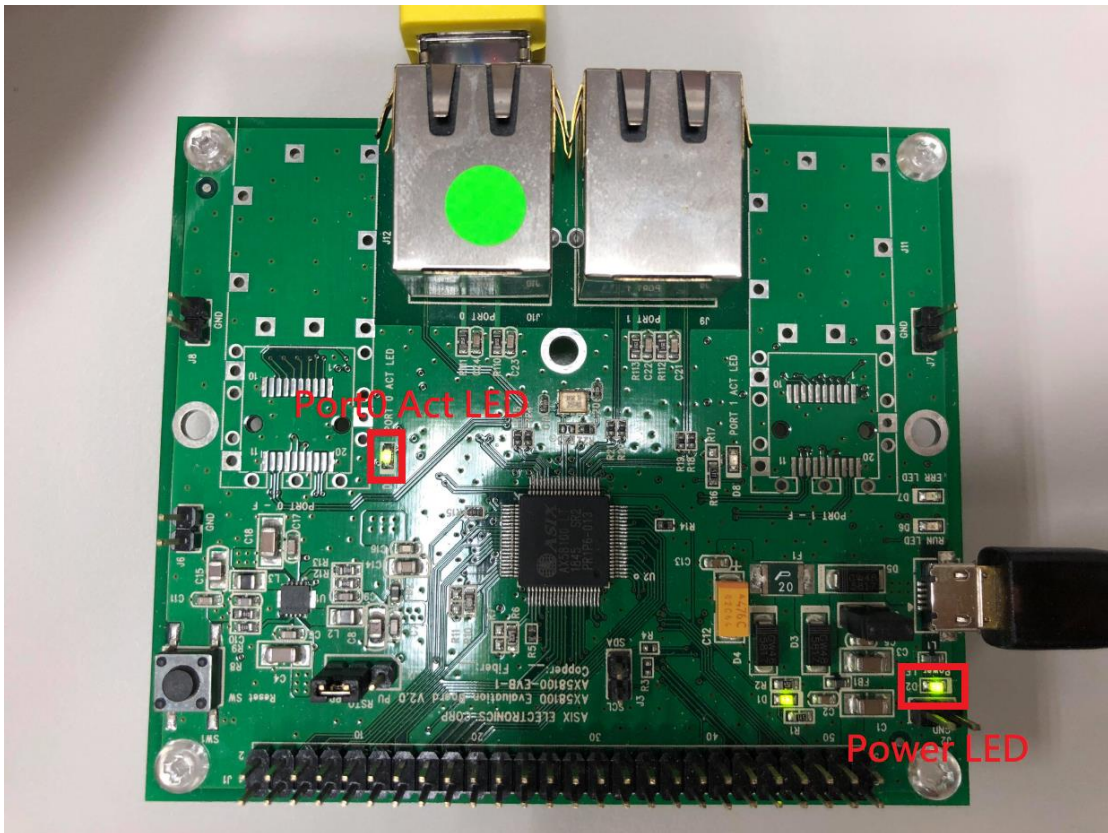


Figure-4. Connect

## 4-2. TwinCAT Project

After installed TwinCAT XAE successfully, you can start the XAE through system tray icon as below figure. The TwinCAT development environment is already integrated into Visual Studio. We can use Visual Studio 2015 as development IDE.

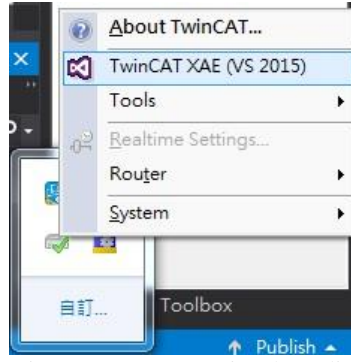


Figure-5. Open Visual Studio

Any common deployment or application through TwinCAT XAE should be processed under a TwinCAT project. We create an empty TwinCAT project and scan out EtherCAT slaves that linked to the master. If you have a Beckhoff real-time compatible network adapter (ex: Intel I-350) in the system, TwinCAT master can bundle the adapter as main EtherCAT port. If you have 2 adapters, the second adapter can be used for redundancy. Whatever affairs EtherCAT related must be under TwinCAT XAE. Create a TwinCAT project first and please refer to below steps:

- **Step 1:** Click “**New TwinCAT Project...**”

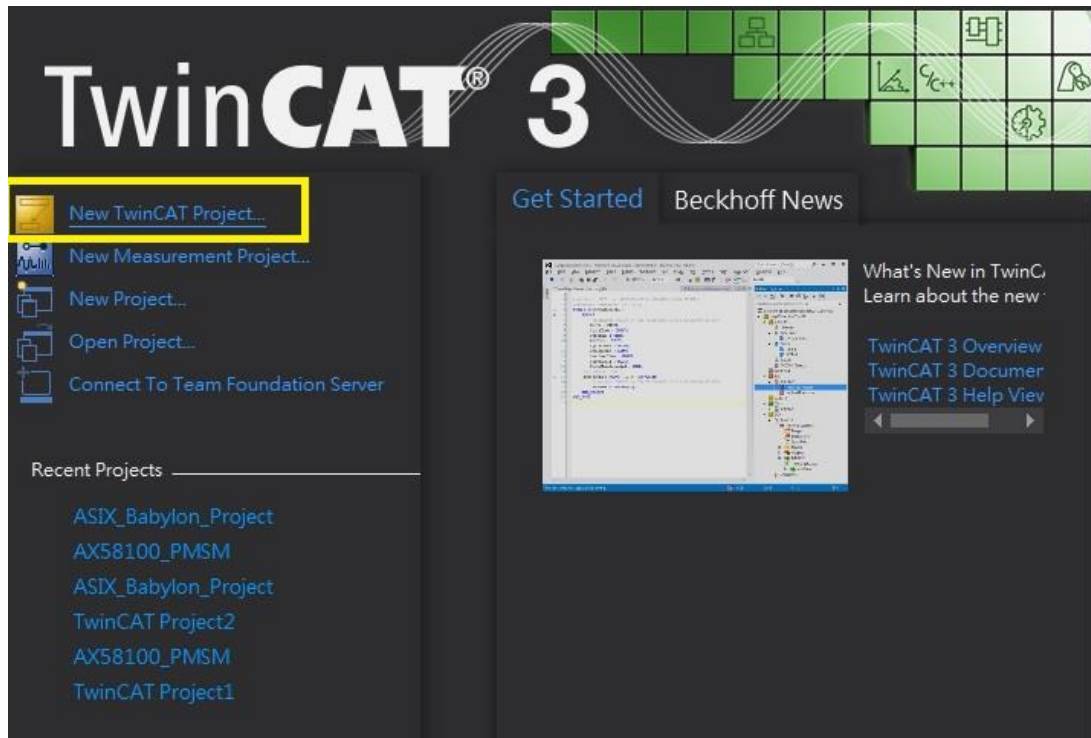


Figure-6. Create new empty TwinCAT project

- **Step 2:** Specify “Name” and “Location”, click “OK”

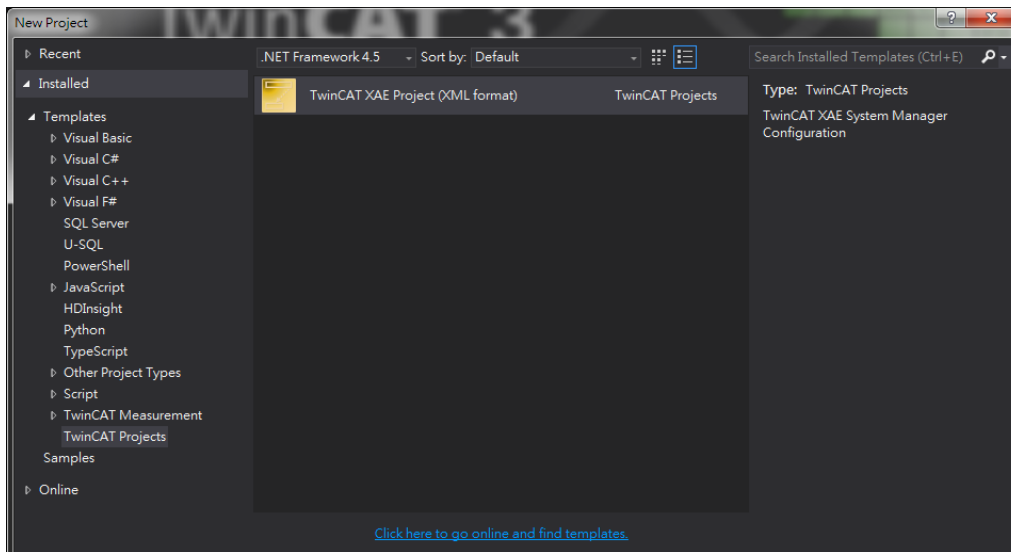


Figure-7. Set Project name

- **Step 3:** Click “Show Realtime Ethernet Compatible Devices...”

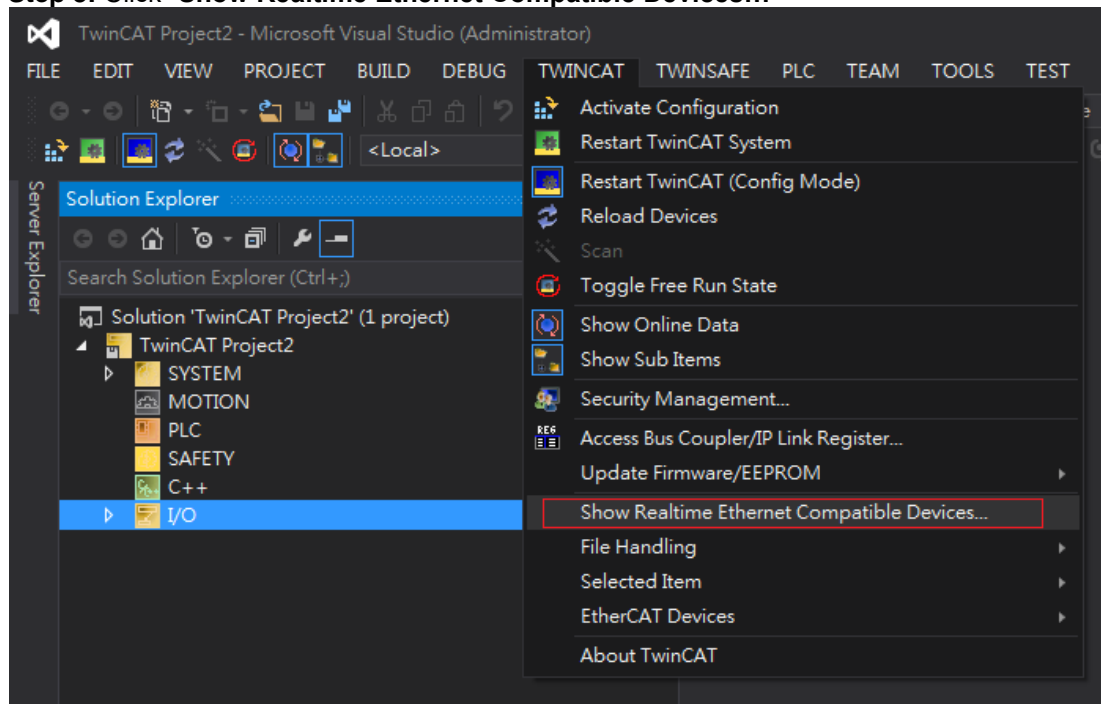


Figure-8. select “Realtime Ethernet Compatible Devices”

- **Step 4:** Make sure your network adapter installed Beckhoff EtherCAT real-time driver. If your network adapter appears under “**Compatible**”, select and click the “Install” button to install Beckhoff real-time driver.

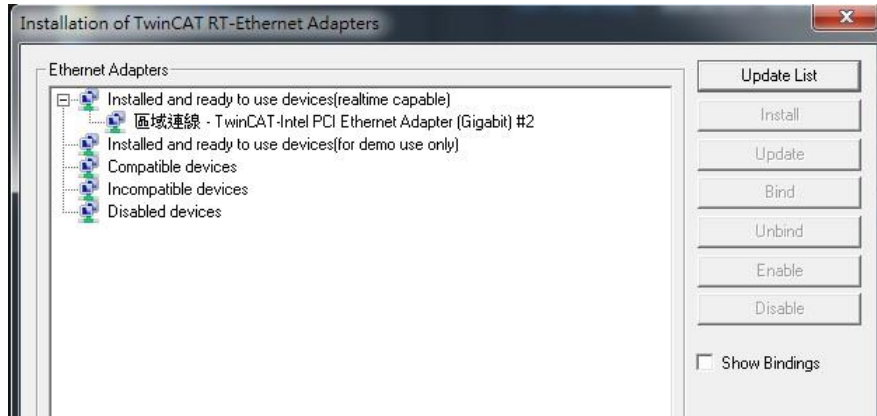


Figure-9. NIC list and drive install

- **Step 5:** Please copy the correct AX58100 ESI file (e.g. “AX58100\_EVB\_DIO\_ESI\_00010200\_00000001\_20180410.xml”) into TwinCAT ESI directory “C:\TwinCAT\3.1\Config\Io\EtherCAT”.

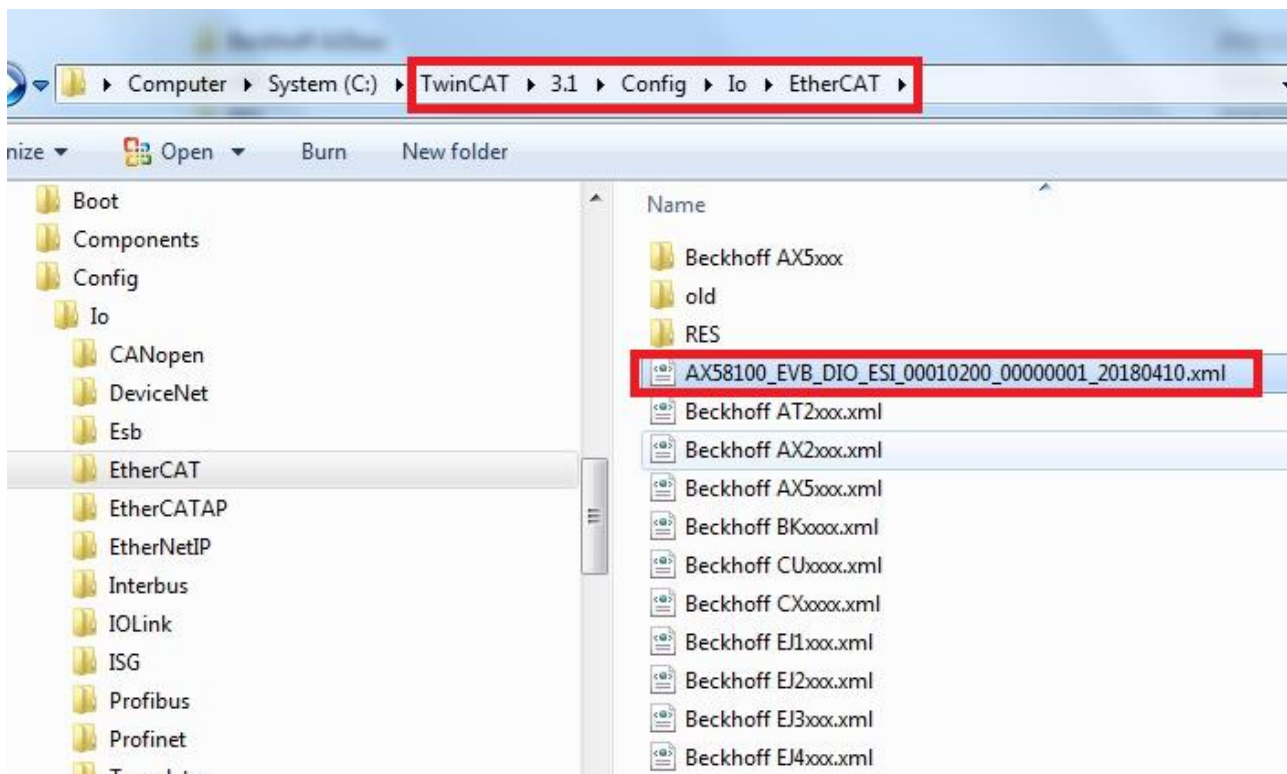


Figure-10. ESI file location

- **Step 6: Click “Reload Device Descriptions”**

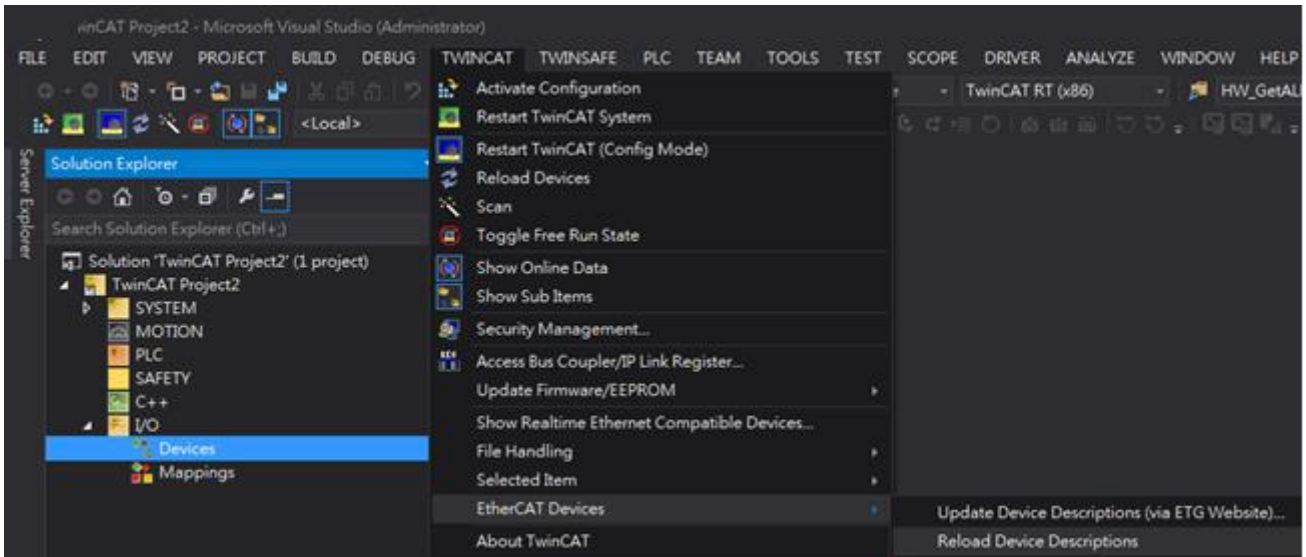


Figure-11. Reload device descriptions

- **Step 7: Right-click on “IO -> Devices” and select “Scan”**

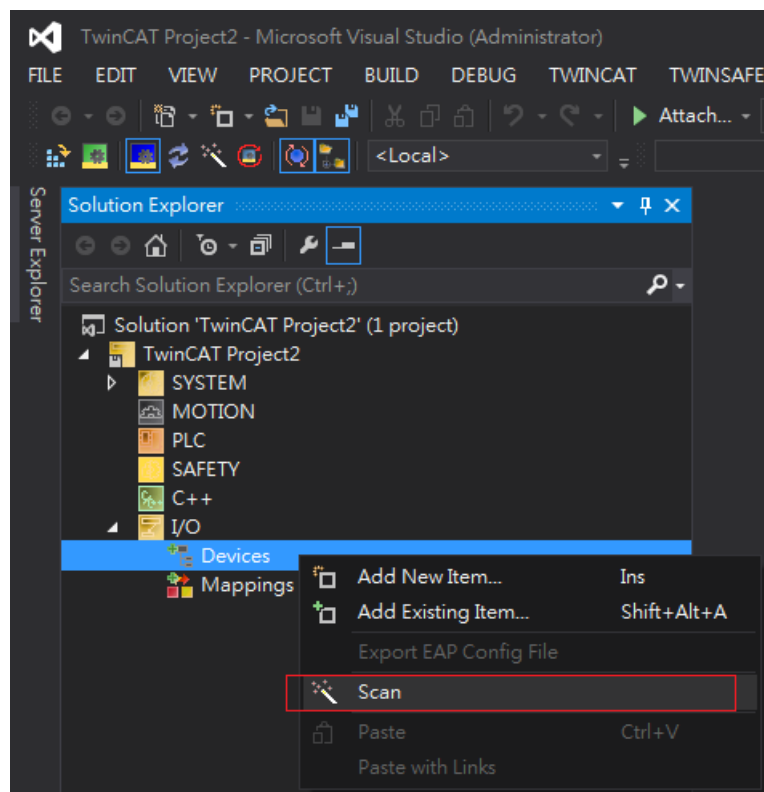


Figure-12. Scan device

- **Step 8:** Click “OK” for below dialog.

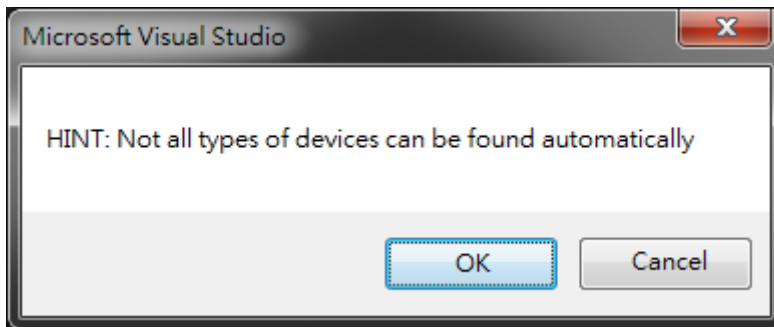


Figure-13. Attention dialog

- **Step 9:** Select correct local area connection that link to EtherCAT slave and click “OK”.

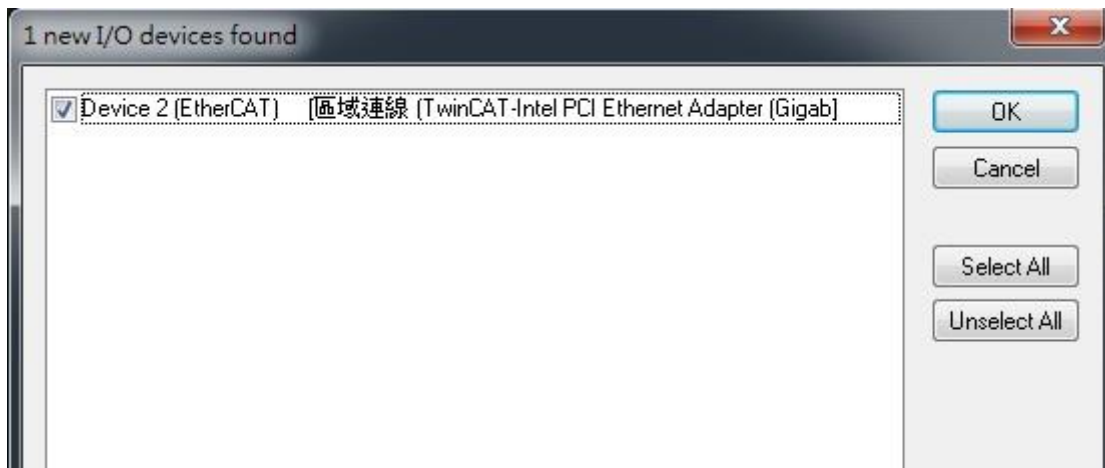


Figure-14. Choose NIC

- **Step 10:** Click “Yes” for below dialog.

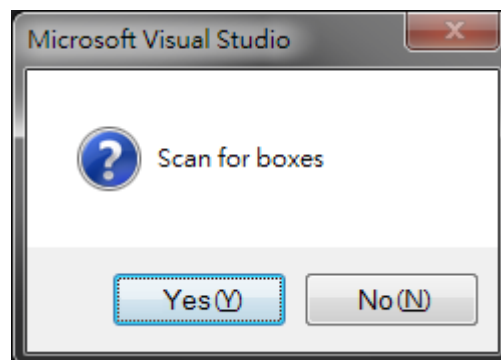


Figure-15. confirm

- **Step 11:** Click “Yes” for below dialog.

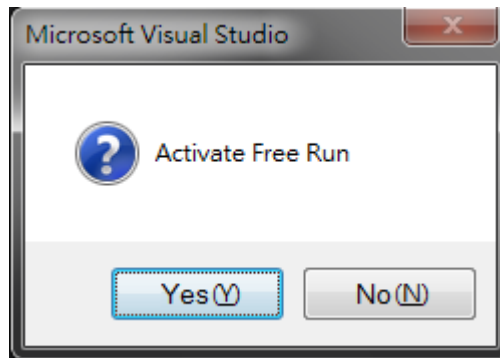


Figure-16. Auto into free run mode

- **Step 12:** TwinCAT master will scan out all EtherCAT slaves via Ethernet port of the network adapter. Now we double click “I/O->Devices->Device X (EtherCAT)”, at the right-window shows the EtherCAT slaves that master found. In this example, we found **Box 1 (AX58100\_EVB\_DIO\_16)**.

Note: Please confirm that slave already at “OP” state and Run Led already light on.

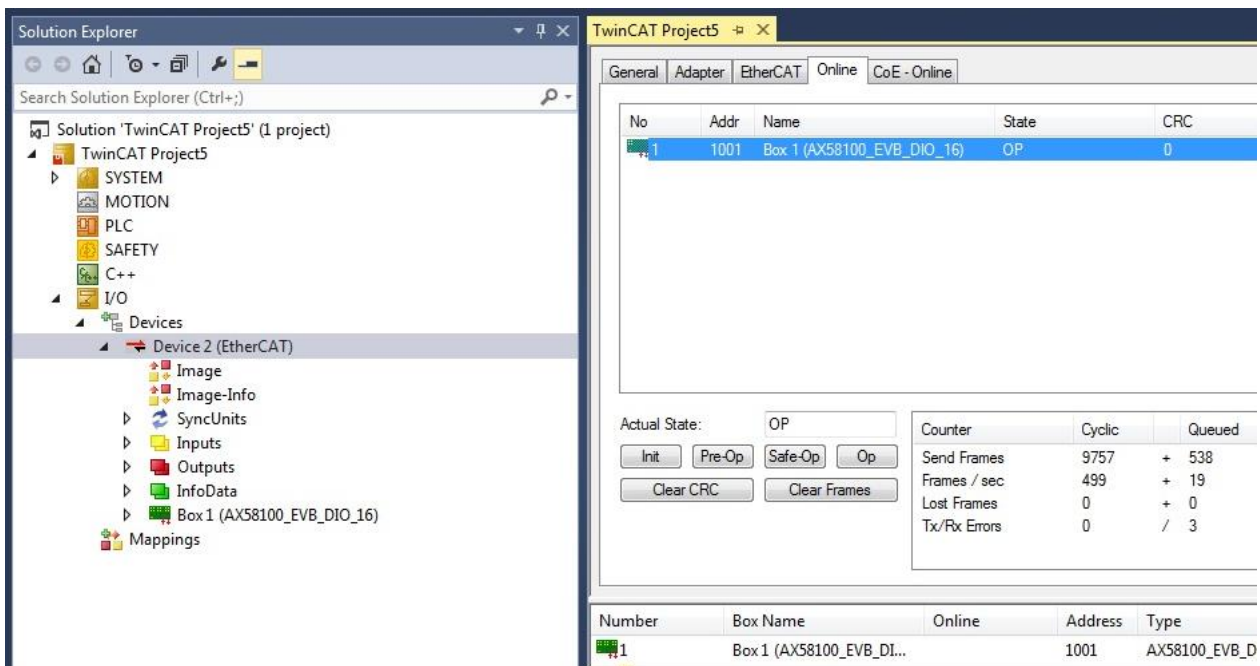


Figure-17. The EtherCAT slave list

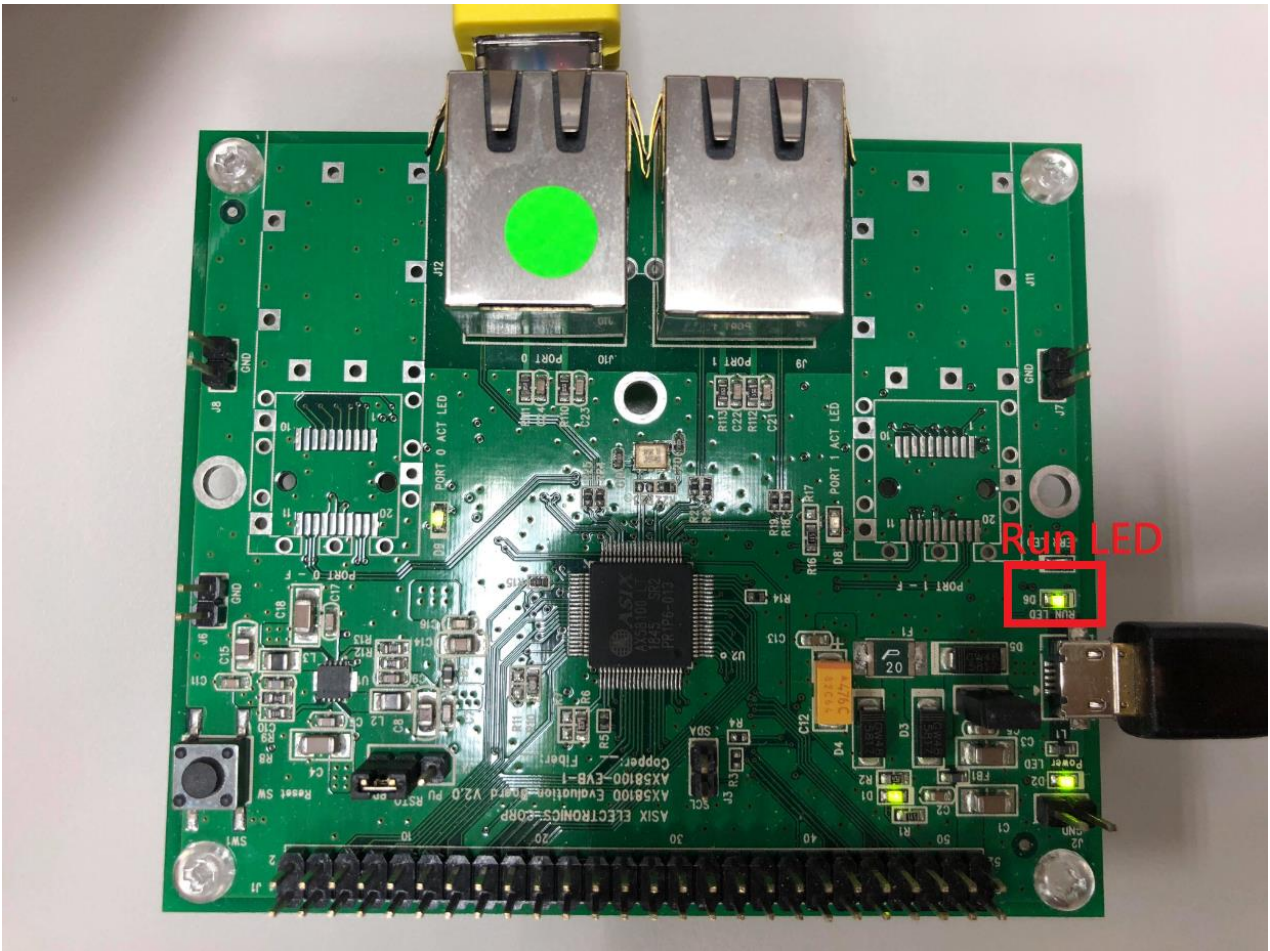


Figure-18. The Run LED lights on

## 5. 16 Bit DIO Verify

If you finish the procedures above chapters mentioned, here we can start to verify 16 Bit DIO.

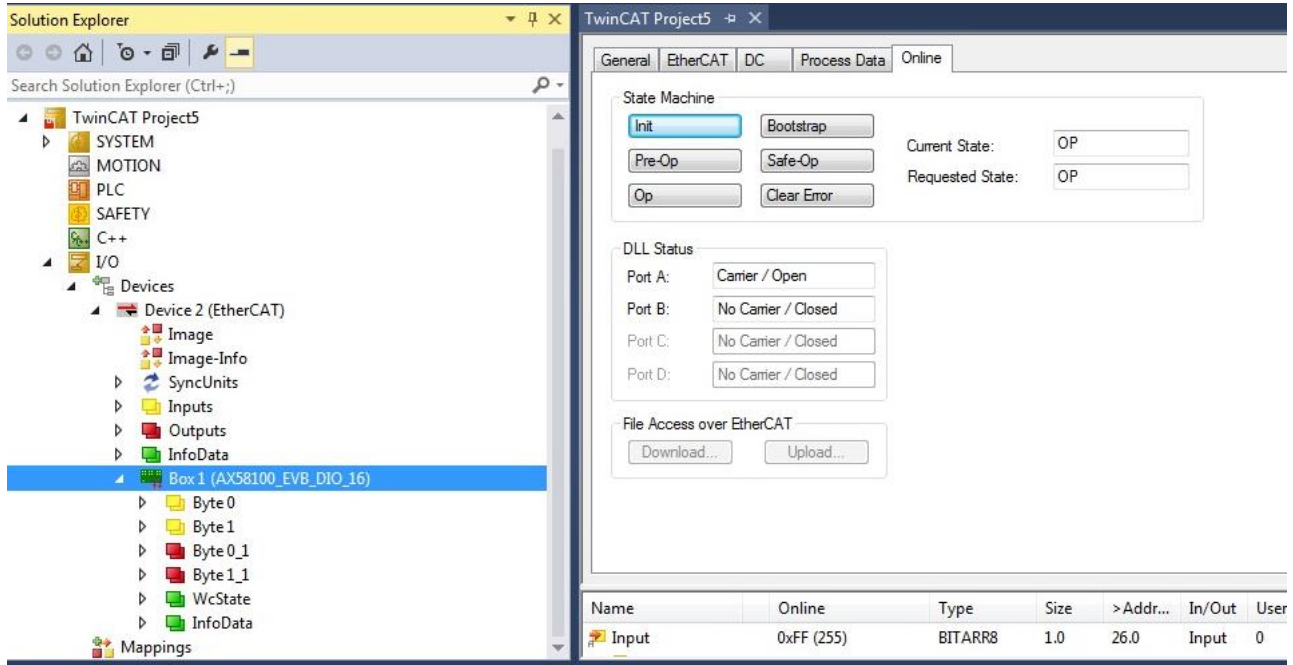


Figure-19. EtherCAT slave list and active

### 5-1. GPIO Output

Please follow below steps to verify GPIO output.

- **Step 1:** Please choose the output pin which one you want to verify.

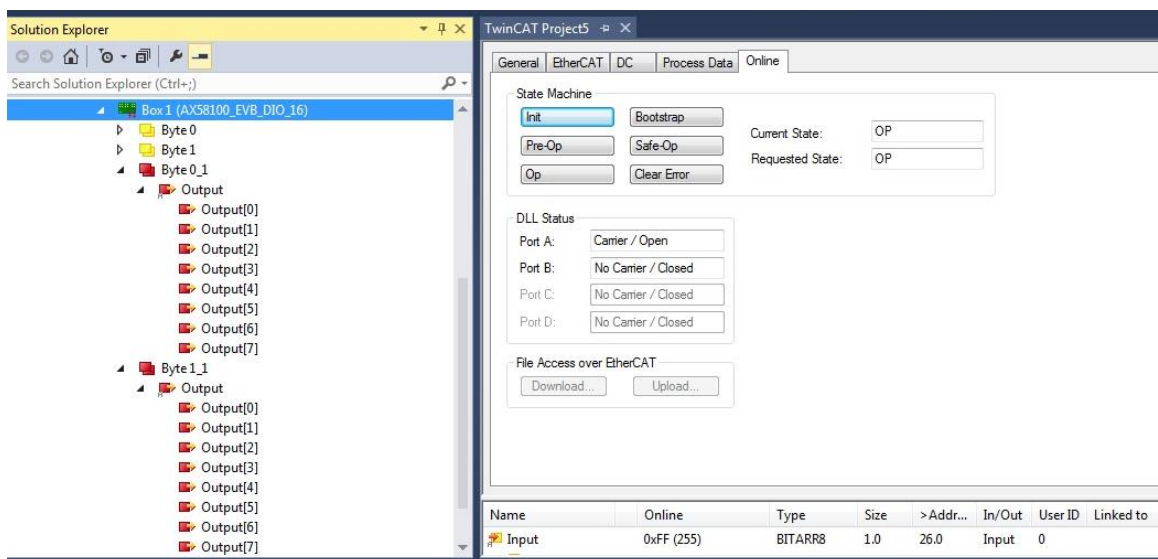


Figure-20. EtherCAT slave GPIO output pin list

- **Step 2:** Please select the voltage status high/low to verify.

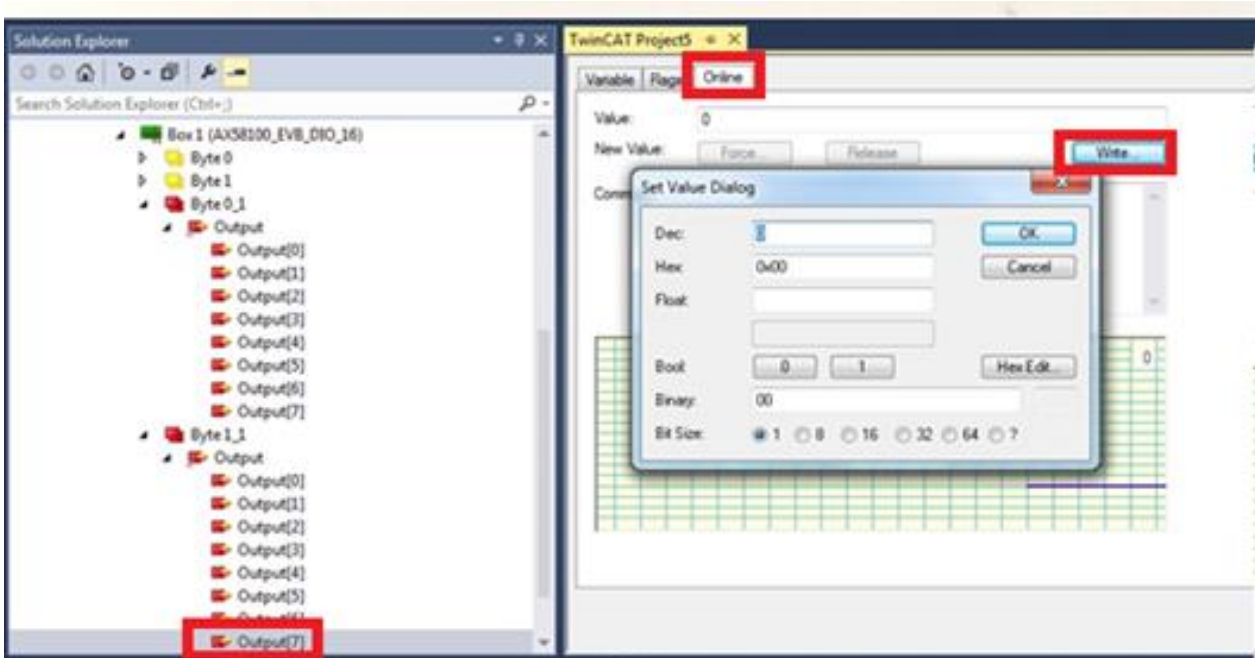


Figure-21. EtherCAT slave GPIO output pin status select.

- **Step 3:** Confirm the voltage change by multimeter is correct or not.

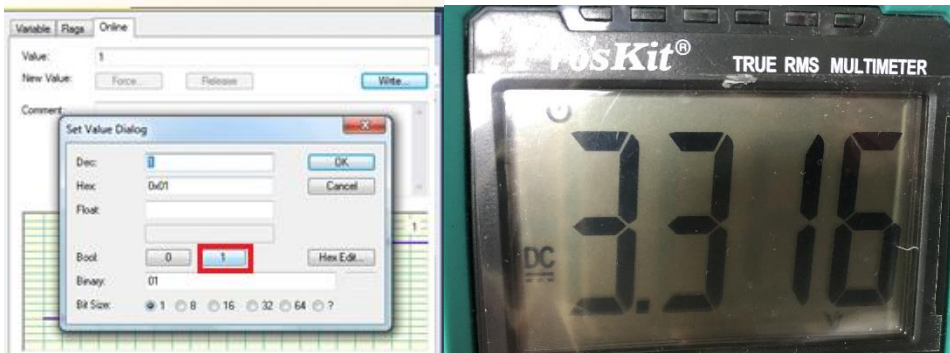


Figure-22. EtherCAT slave GPIO output pin status=1.

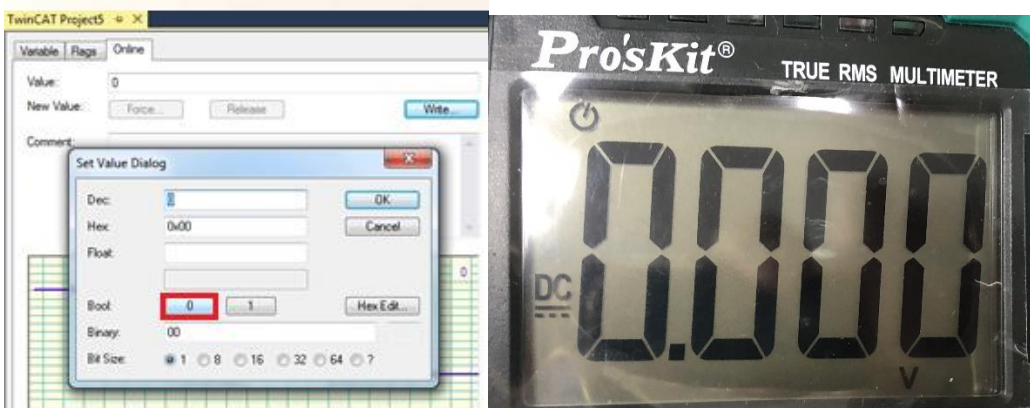


Figure-23. EtherCAT slave GPIO output pin status=0.

- **Step 4:** Repeat step1 – step 3.

## 5-2. GPIO Input

- **Step 1:** Please choose the Input pin which one you want to verify.

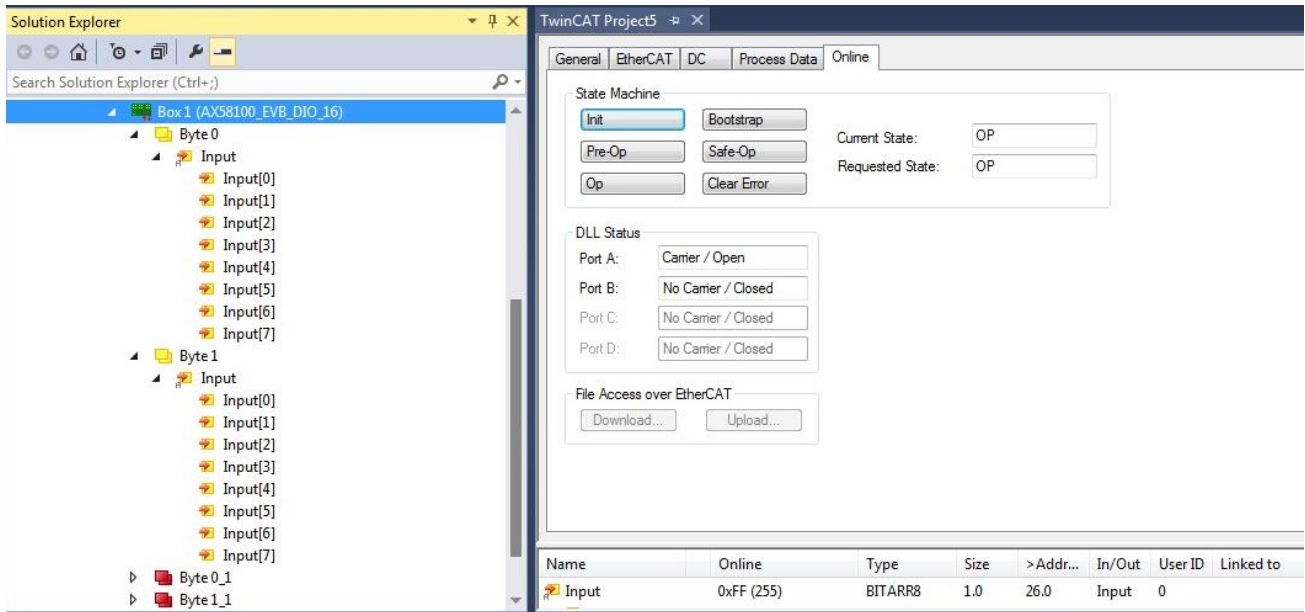


Figure-24. EtherCAT slave GPIO input pin list.

- **Step 2:** Please connect to the input pin with GPIO output pin or pull-high(3.3V) / pull- low.
- Example as below: GPIO output [7] connect to GPIO input [0] on EVB board.

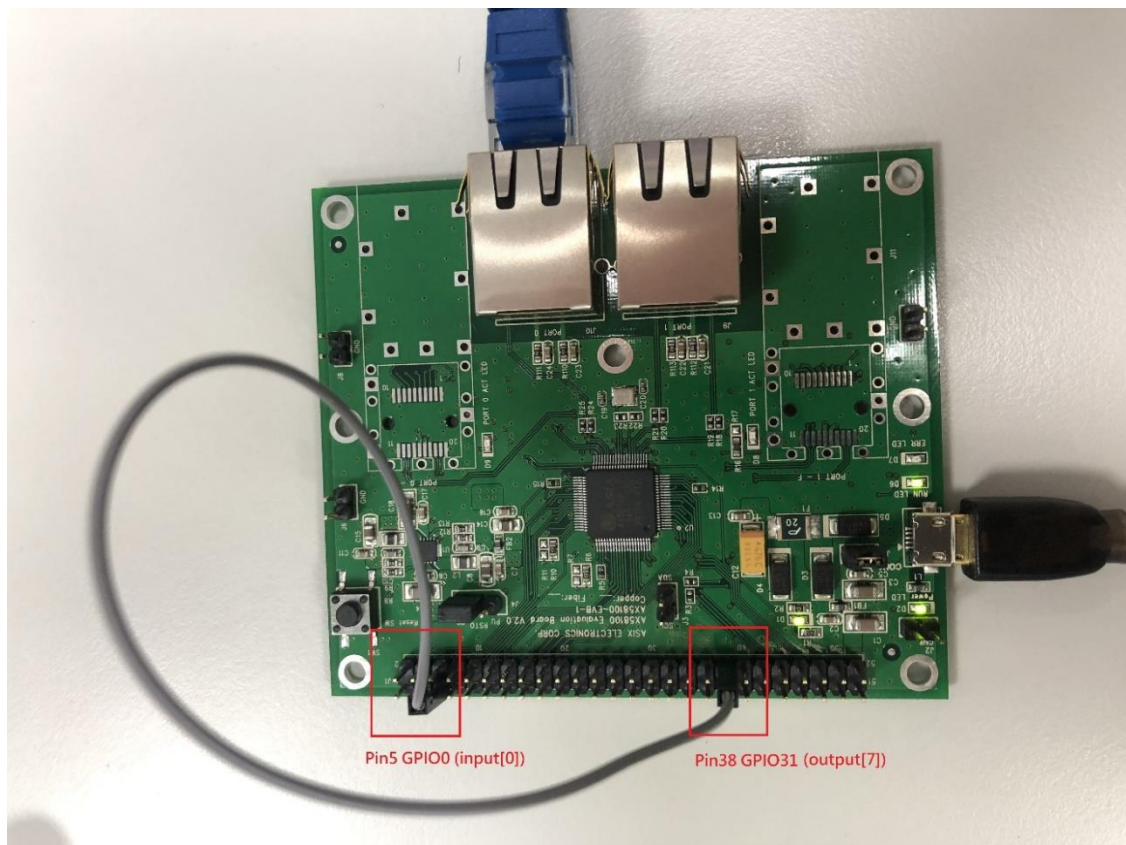


Figure-25. Connection of GPIO output pin connect to input pin.

- **Step 3:** Confirm the voltage change by multimeter or status value of input pin is correct or not.

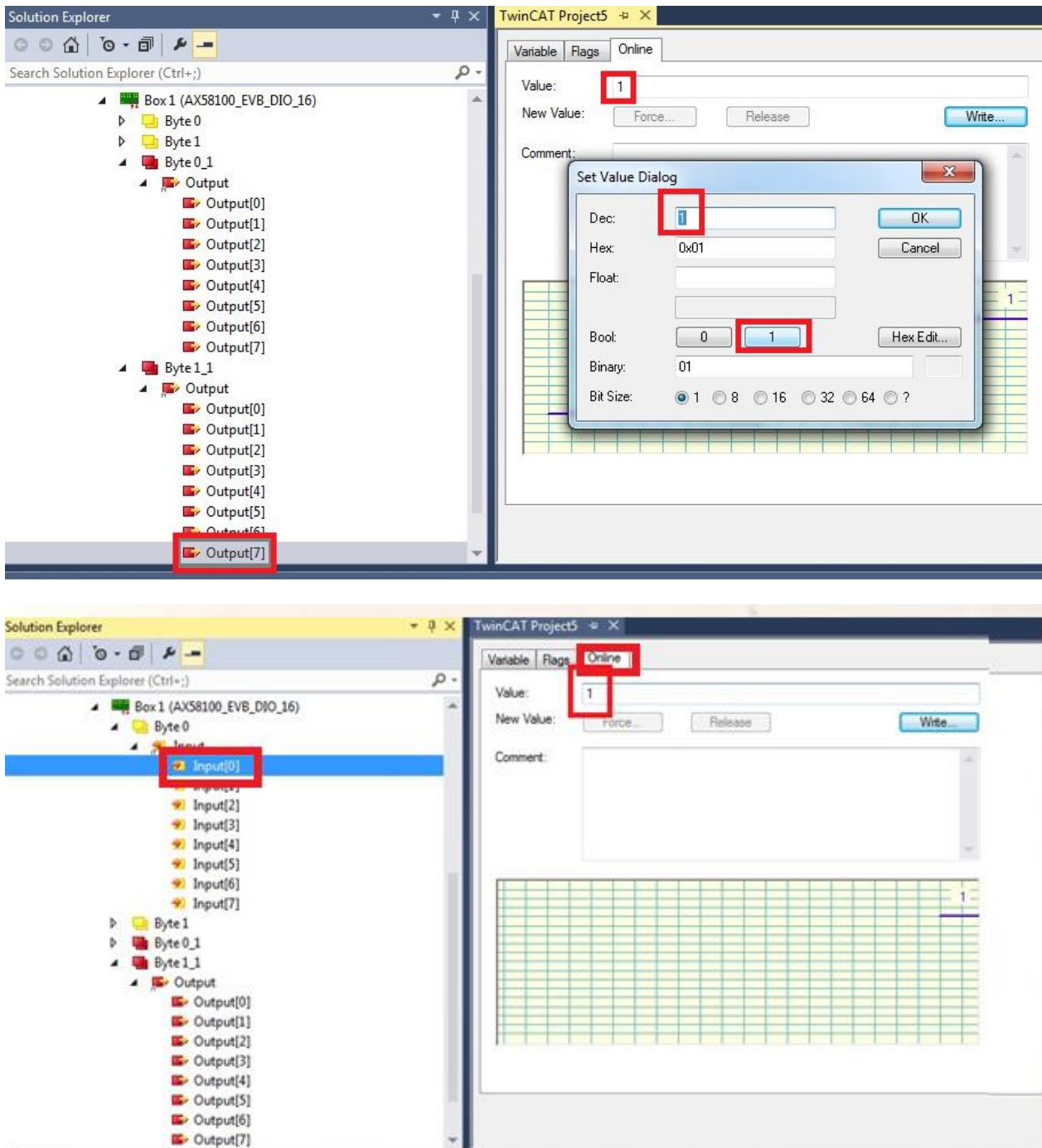


Figure-26. GPIO output select =1, GPIO input status value =1.

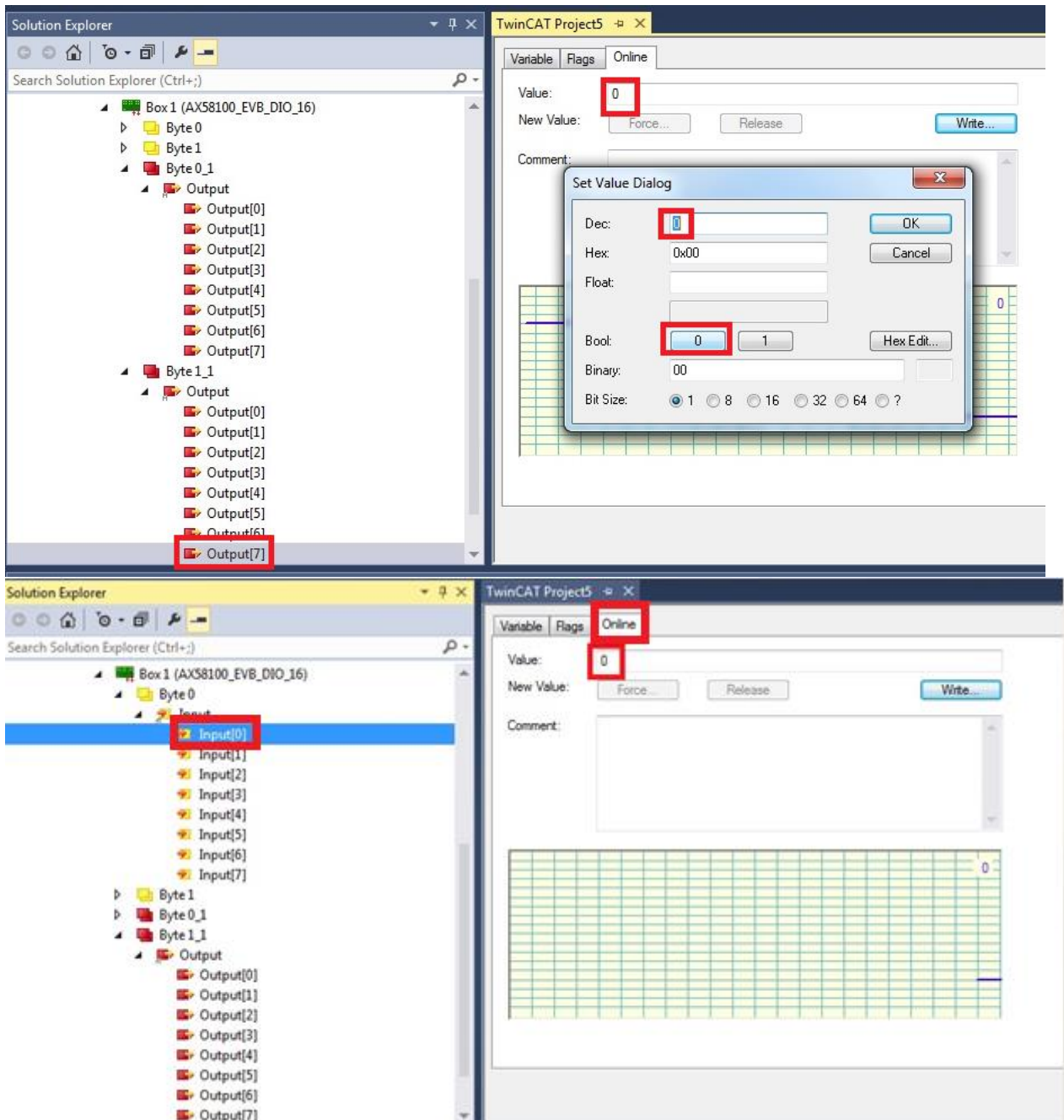


Figure-27. GPIO output select =0, GPIO input status value =0.

- **Step 4:** Repeat step1 – step 3.



**4F, No.8, Hsin Ann Rd., Hsinchu Science Park,  
Hsinchu, Taiwan, R.O.C.**

**TEL: +886-3-5799500**

**FAX: +886-3-5799558**

**Email: [support@asix.com.tw](mailto:support@asix.com.tw)**

**Web: <http://www.asix.com.tw>**